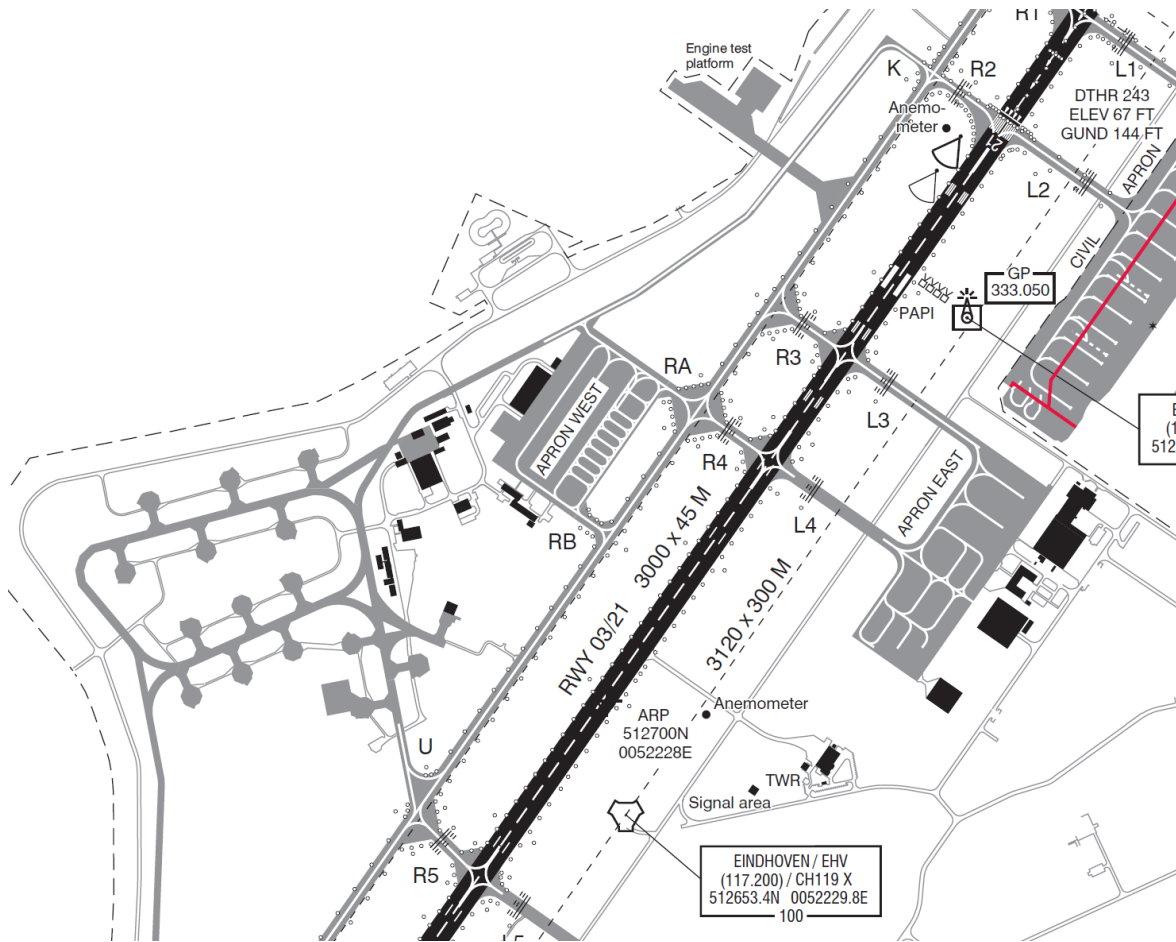


RT

INFO - Luchtverkeersleiding of separatie?

# Apron West





- Holding RA
  - Klaring voor de 21
- En toen.....



# Essentie blokjes

- **Wie** (ben ik) (call sign of type)
- **Wat** (doe ik) (maak een VFR vlucht van A-B)
- **Waar** (zit ik) (apron of overhead met hoogte)
- **Waarom**
- (roep ik op) (s/u, taxi, crossing, freq, change, for landing)
- **Hoe**
- (wil ik het) (via/via, route, approach, R arrival/departure)
- **Afsluiten** (met C/S)

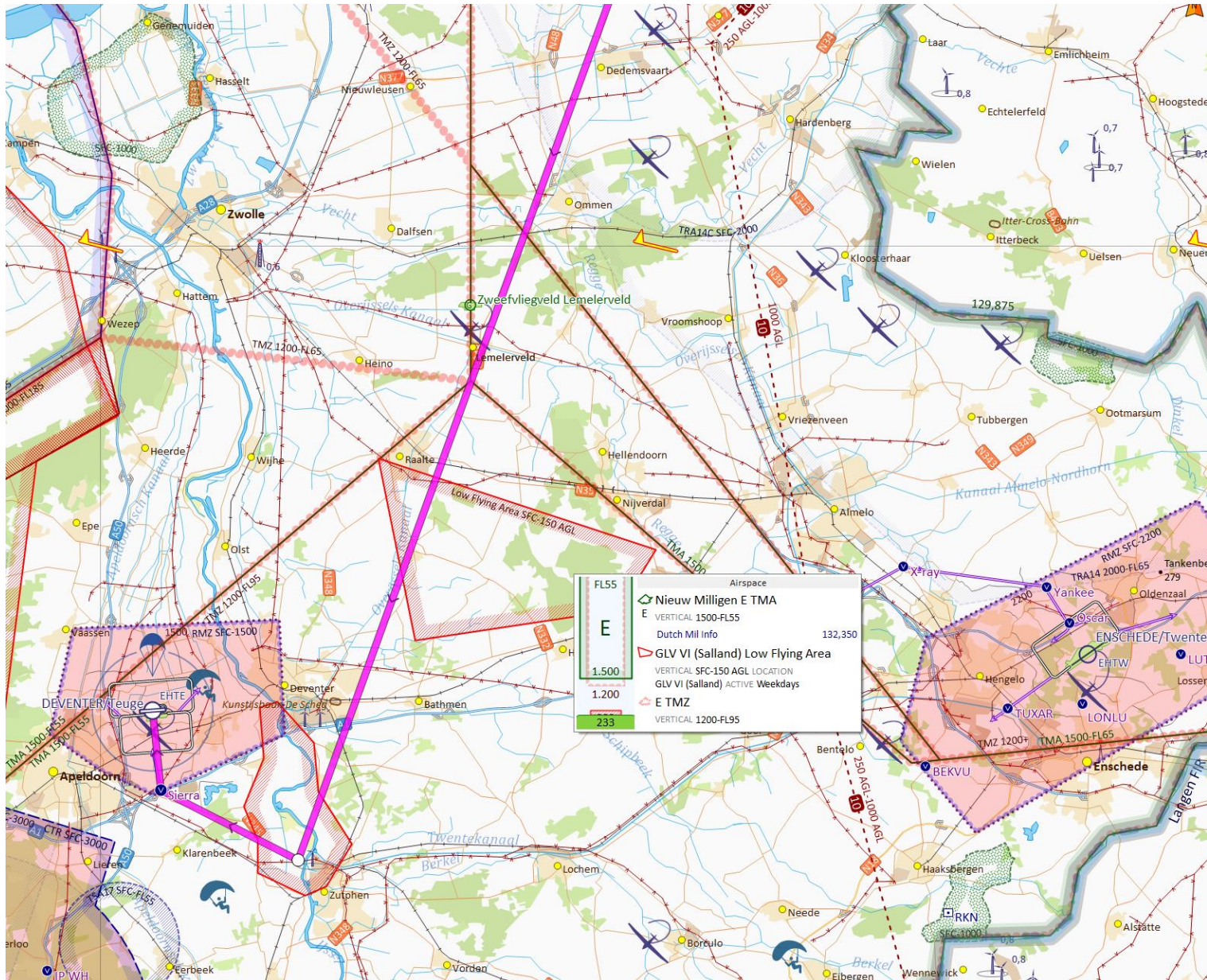
# ITK PAI

- **I**d (call sign)
  - **T**ype (type of aircraft)
  - **K**ind of flight (VFR flight from A – (B))
  - **P**osition (overhead X, abeam x, passing R)
  - **A**ltitude ft
  - **I**ntentions (s/u, taxi, crossing, frequency change, for landing)  
(evt + via/via, route, X arrival/departure)
- Afsluiten met** C/S

# Callsign

**Vooraan** bij contact maken station + eigen initiatief (voorbeeld: PLC joining downwind 23); PLC approaching V5, ready for departure)

**Achteraan**, als afsluiting van de read-back.



FL55	Airspace
<b>E</b>	<b>Nieuw Milligen E TMA</b>
E	VERTICAL 1500-FL55
	Dutch Mil Info 132,350
<b>1.500</b>	<b>GLV VI (Salland) Low Flying Area</b>
	VERTICAL SFC-150 AGL LOCATION
	GLV VI (Salland) ACTIVE Weekdays
<b>1.200</b>	<b>E TMZ</b>
	VERTICAL 1200-FL95
<b>233</b>	

Tools Ucode

### Meppen (ETWM)

**METAR from 13:20 Z** V  
19 min ago

WIND 280° @ 15 kt G 36  
kt

TEMPERATURE 10° / 4°  
66%

PRESSURE 1016 hPa

VISIBILITY 9999 m

CLOUD Broken at 3.100 ft

---

### GRONINGEN/Eelde (EHGG)

**METAR from 13:25 Z**  
14 min ago

WIND 270° @ 23 kt G 35  
kt

TEMPERATURE 10° / 4°  
66%

PRESSURE 1016 hPa

VISIBILITY 9999 m

*This bulletin was produced by automatic equipment.*

---

**TAF from 11:17 Z** V  
24 Jan 2024 12:00 Z - 25 Jan 2024 18:00 Z

WIND 270° @ 28 kt G 38  
kt

VISIBILITY 9999 m

CLOUD Scattered at 3.000 ft

**Becoming 14:00 Z - 17:00 Z**

WIND 270° @ 17 kt

**Becoming 25 Jan 2024 03:00 Z - 25 Jan 2024 06:00 Z**

WIND 250° @ 6 kt

**Occasional 25 Jan 2024 04:00 Z - 25 Jan 2024 09:00 Z (30% chance)**

VISIBILITY 4000 m

**Mist**

**Becoming 25 Jan 2024 16:00 Z - 25 Jan 2024 18:00 Z**

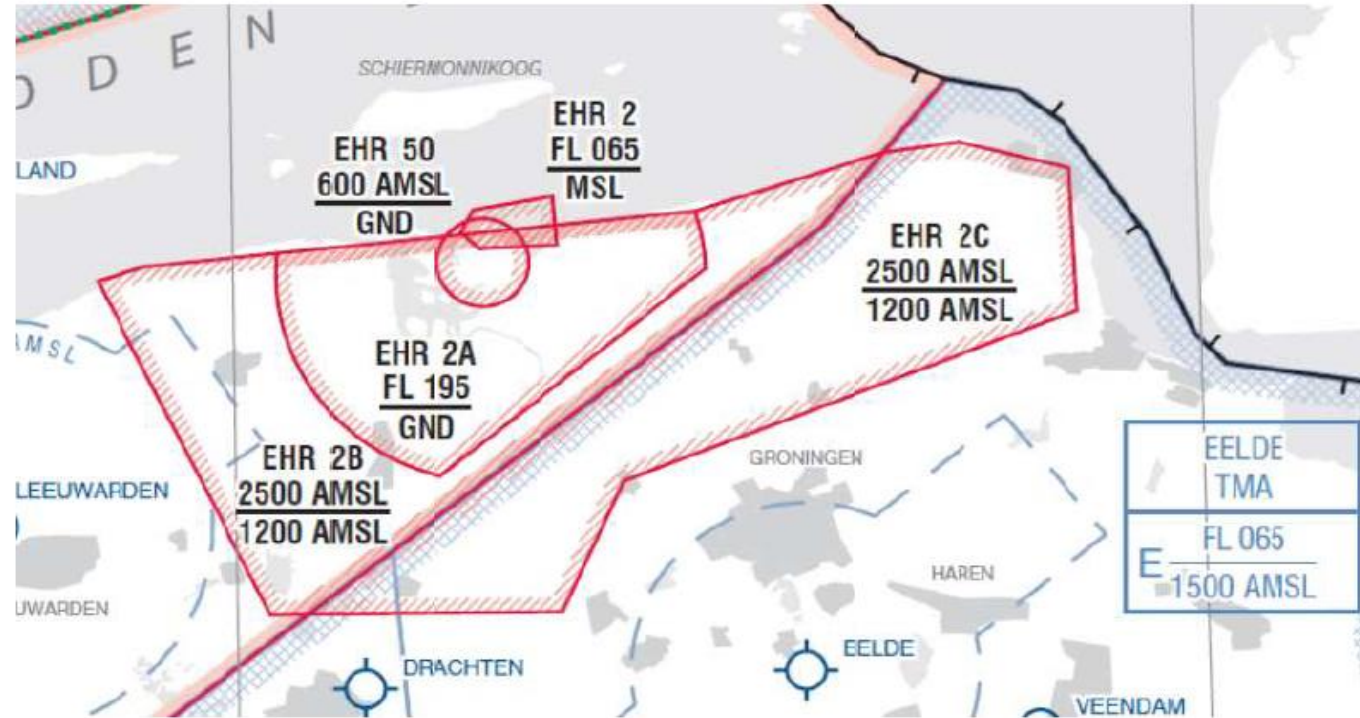
VISIBILITY 7000 m

NOTAM Weather

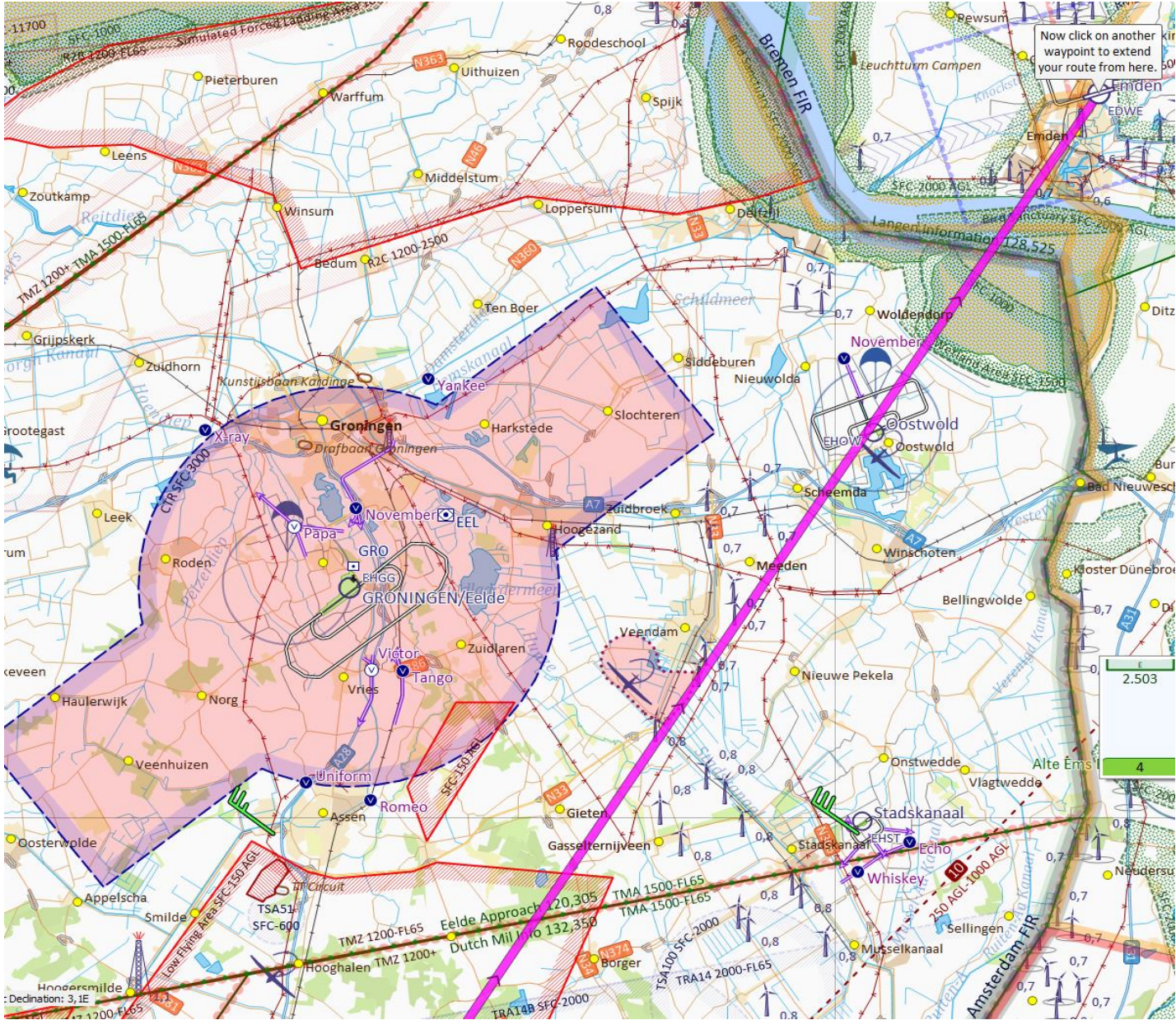


Is the EHR2B active 😊

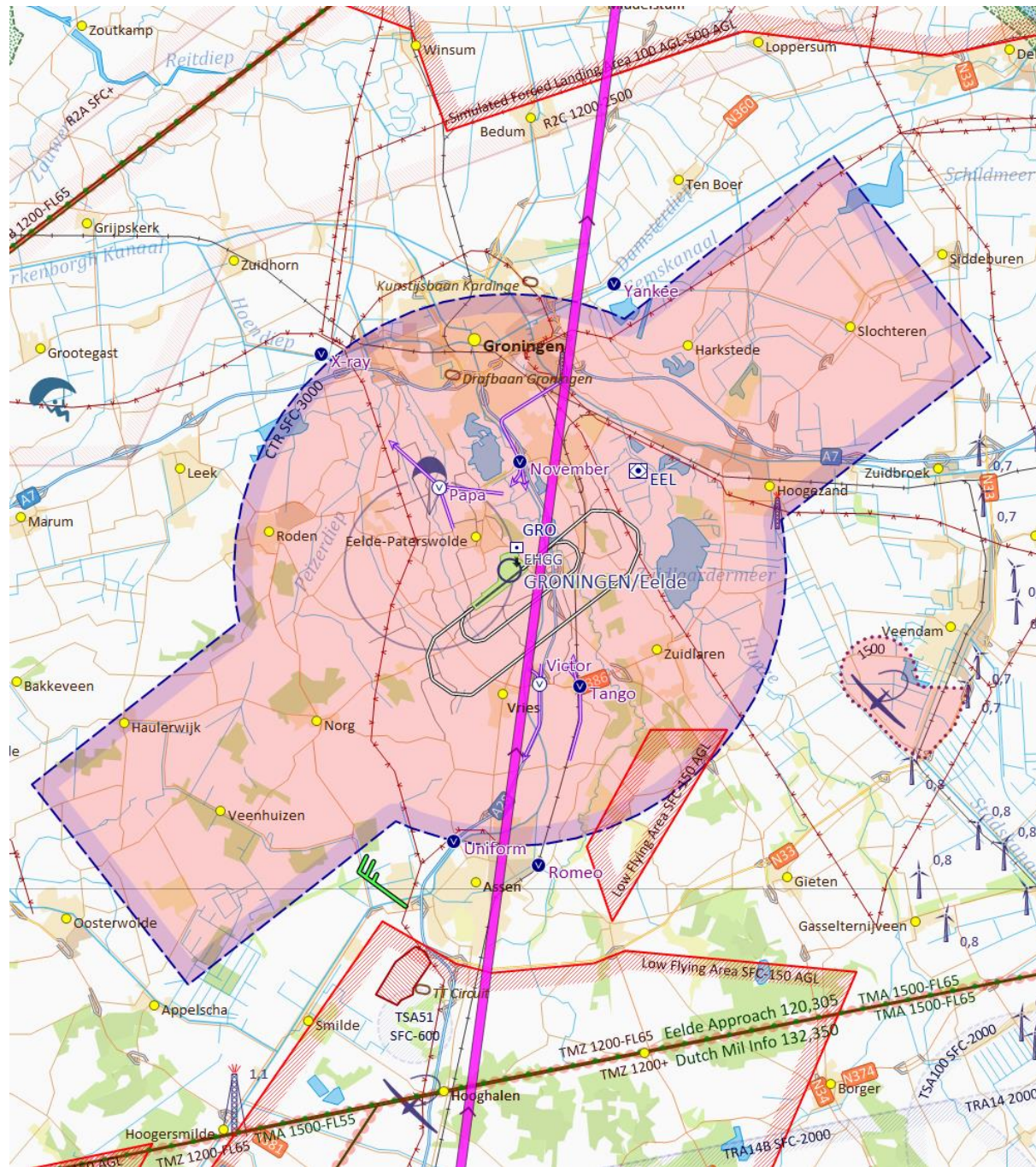
**EHR 2A, 2B, 2C** ( uit luchtvaartgids op 31 mei 2012; deel van kaart ENR 6 - 5. 1 )

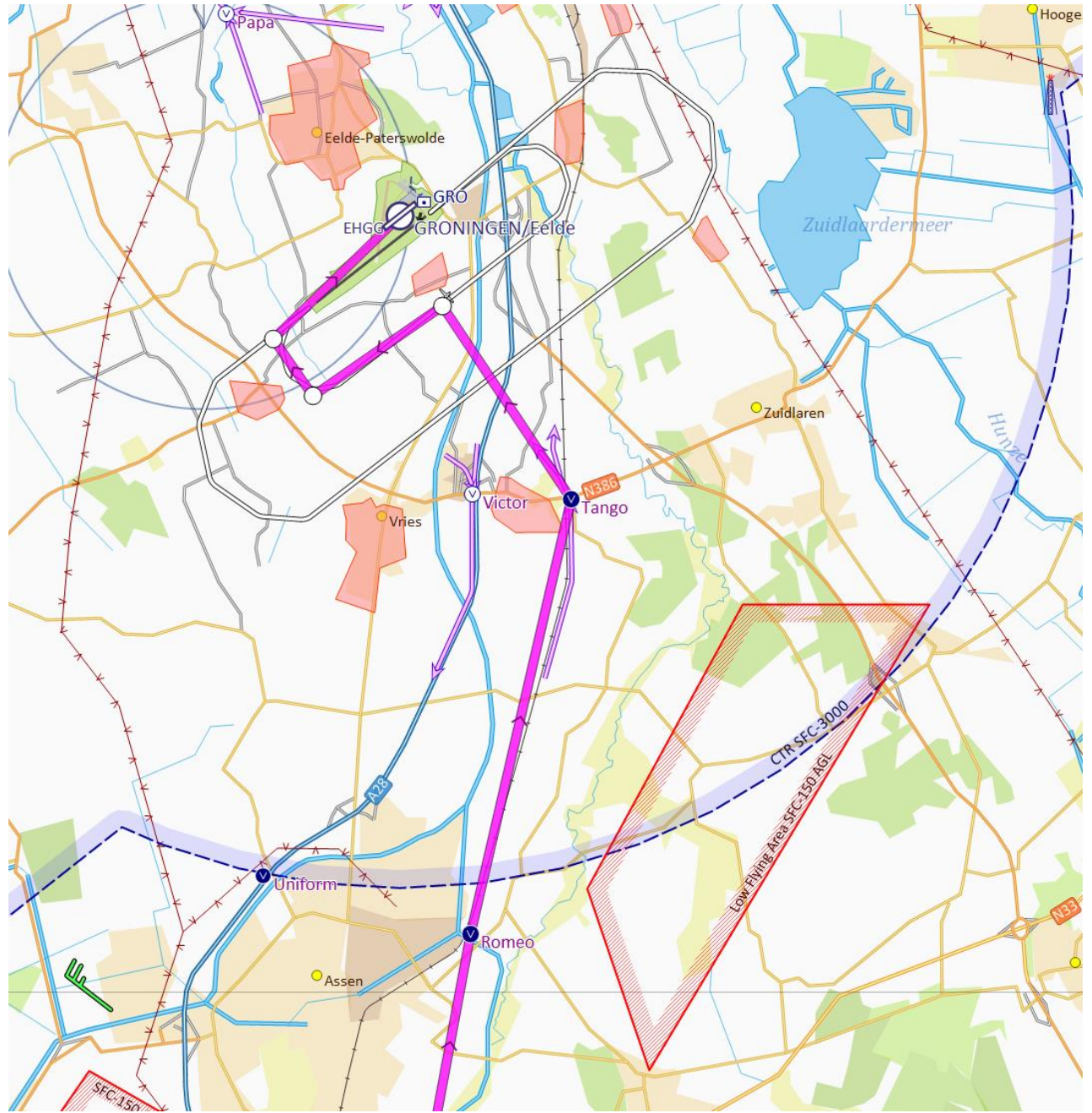


# TMA crossing

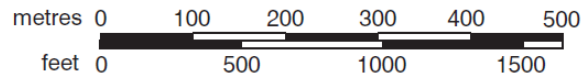


# CTR crossing

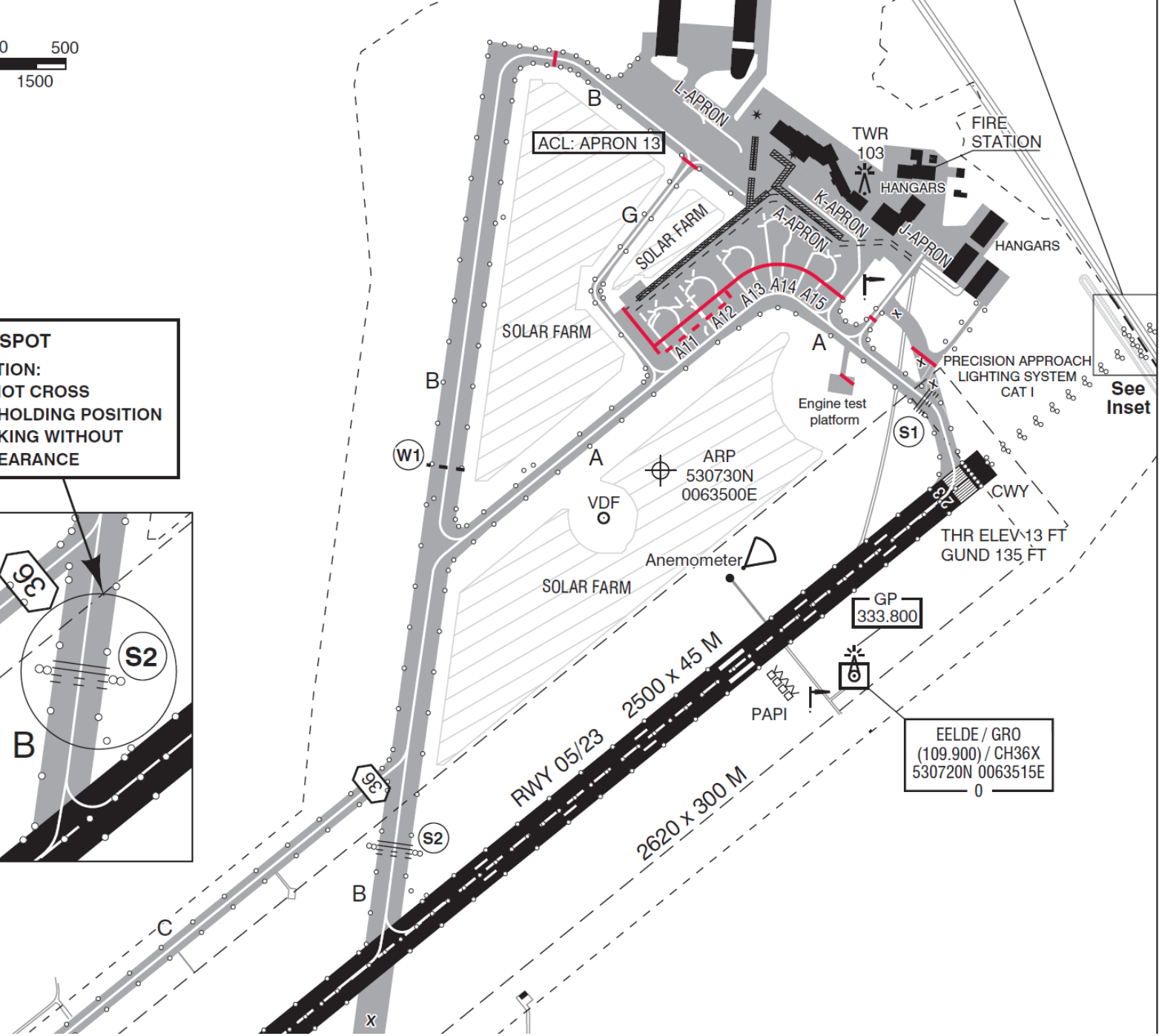
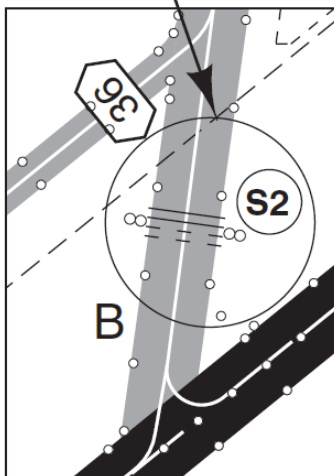




SCALE 1 : 12 500



**HOTSPOT**  
CAUTION:  
DO NOT CROSS  
THE HOLDING POSITION  
MARKING WITHOUT  
A CLEARANCE



See Inset





# VFR Leer

